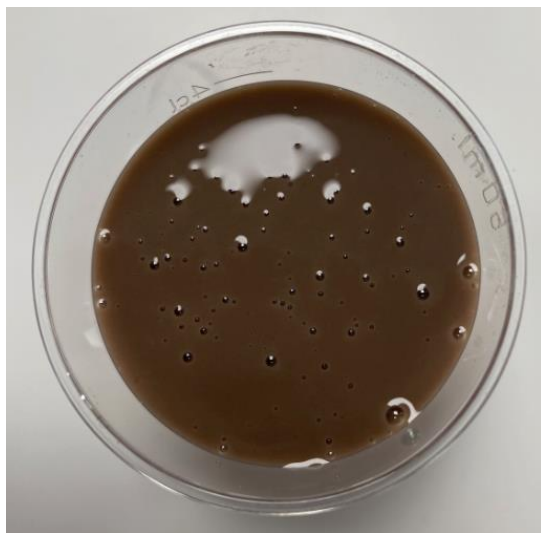


PRP-06-TEC-034		Product Information Document	 by CambridgeWeight Plan [®]
V1.2	06/09/2023	MRP CHOCOLATE FLAVOUR SHAKE N GO	

Product Summary Information

Product Name			Chocolate Shake ‘n’ Go								
Product Descriptive Name			Chocolate flavour skimmed milk and milk protein shake. Meal replacement for weight control.								
Energy per 100ml:		339 kJ/81 kcal		Energy per portion:		848 kJ/203 kcal		Shelf Life at Launch:		12 months	
Packing Format(s)			24 X 250 ml e or 12 X 250 ml e								
Summary Allergen Statement			Product contains: Milk .								
Product Type			Meal replacement (Ready to Drink)								
Category (✓)											
Shake	Smoothie	Soup	Porridge	Dessert	Savoury Meal	Bites	Bar	Snack	Water Flavouring	Other	
										✓	
CN Code		HS Code		Recipe Code		Recipe Revision		Revision Date			
22029991		220299		FG370624		1		12/06/2020			

Representative Product Images




Organoleptic/Sensory Description

Appearance	Creamy brown liquid, smooth and thick.
Aroma	Strong notes of chocolate. Sweet. UHT milk note detectable.
Flavour	Strong notes of chocolate. UHT milk note detectable.
Texture	Thick and smooth. Yoghurt like (when served chilled).
Sound	N/A

PRP-06-TEC-034		Product Information Document	 by CambridgeWeight Plan [®]
V1.2	06/09/2023	MRP CHOCOLATE FLAVOUR SHAKE N GO	

THE 1:1 DIET by CambridgeWeight Plan [®]	Mandatory Particulars As per Regulation (EU) No 1169/2011 of 25/11/2011	

Product Name	Chocolate Shake ‘n’ Go		
Descriptive Name	Chocolate flavour skimmed milk and milk protein shake. Meal replacement for weight control.		
Serving size / pack size	Individual serving	250 ml e	For multipack include number x weight / volume, e mark and total weight in brackets
	Multipack / carton	24 X 250 ml e 12 X 250 ml e	
Ingredient list	Ingredients: Skimmed milk 61%, Water, Sugar, Milk protein, Fat reduced cocoa powder, Vegetable oil (maize), Stabilizers (cellulose gel, cellulose gum, sodium polyphosphate, carrageen), Chicory root fibre, Compound vitamin and mineral mixture (magnesium citrate, potassium citrate, vitamin C, ferrous sulphate, vitamin E acetate, zinc sulphate, nicotinamide, vitamin A acetate, calcium-D pantothenate, copper gluconate, manganese sulphate, D-biotin, sodium selenite, chromium chloride, vitamin D3, vitamin B12, pyridoxine hydrochloride, vitamin K, potassium iodide, thiamine mononitrate, riboflavin, sodium molybdate, folic acid), Flavouring, Salt, Antioxidant: ascorbyl palmitate.		
Allergen Advice	For allergens, see ingredients in bold.		
Storage Instructions	Store ambient.		
Preparation	None – Product is ready to drink.		
Instructions for use	Shake well before drinking. Once open, keep refrigerated and consume within 24 hours.		
Name and address of FBO	Produced in the EU for Cambridge Weight Plan Ltd, NN17 5LU.		
Country of Origin Statement	Made using EU Milk.		
Advisory Statements	None.		
Health Mark	DE HE 001 EG		
Lot Mark Non-Varnish Area	Space required for printing Date of Manufacture, Best Before, Lot mark and time.		

Preparation Instructions	
	Shake well before drinking. Once open, keep refrigerated and consume within 24 hours.

X:\Technical\Existing Product Information\1. Meal Replacement Products\Ready to Drink\Creamy Creations\Shake 'n' Go Chocolate\002 Product Info Document - Chocolate RTD 06-09-2023 v1.2.docx	Issued by: M Kidd	Approved by: TECHNICAL
		Page 2 of 5

Circulation: Technical Record Sheets Folder

Nutrition Information		per 100 ml	per 250 ml serving	%RI per 100 ml/250 ml
Energy	kJ	339	848	
	kcal	81	203	
Fat ^{1,2}	g	0.9	2.3	
Of which Saturates	g	0.2	0.6	
Mono-unsaturates	g	0.3	0.7	
Polyunsaturates	g	0.4	1.1	
Carbohydrate	g	10	26	
Of which Sugars	g	10	25	
Fibre	g	1.3	3.1	
Protein	g	7.2	18	
Salt	g	0.2	0.5	
Vitamin A	µg	97	242	12/30
Vitamin D	µg	0.6	1.5	12/30
Vitamin E	mg	1.5	3.7	12/31
Vitamin K	µg	9.0	23	12/30
Vitamin C	mg	9.6	24	12/30
Thiamin	mg	0.1	0.4	13/32
Riboflavin	mg	0.2	0.6	17/43
Niacin	mg	2.0	4.9	12/31
Vitamin B6	mg	0.2	0.4	13/32
Folic acid	µg	30	75	15/38
Vitamin B12	µg	0.4	1.1	18/44
Biotin	µg	9.0	22	18/45
Pantothenic acid	mg	0.9	2.2	15/37
Potassium	mg	204	511	10/26
Chloride	mg	96	240	12/30
Calcium	mg	162	405	20/51
Phosphorus	mg	145	363	21/52
Magnesium	mg	45	113	12/30
Iron	mg	1.8	4.4	13/32
Zinc	mg	1.4	3.5	14/35
Copper	mg	0.1	0.3	12/30
Manganese	mg	0.2	0.6	12/30
Selenium	µg	6.6	16.6	12/30
Chromium	µg	4.8	12	12/30
Molybdenum	µg	6.0	15	12/30
Iodine	µg	20	51	14/34

¹This product is compliant with Commission Regulation (EU) No 2019/649 which stipulates that the trans-fat content of food intended for the final consumer and food intended for supply to retail shall not exceed 2 grams per 100 grams of fat. This limit excludes trans-fats which occur naturally in fats of animal origin.

² In compliance with EU Regulation 2016/1413 this product contains at least 1g of linoleic acid per portion.

PRP-06-TEC-034		Product Information Document	 by CambridgeWeight Plan [®]
V1.2	06/09/2023	MRP CHOCOLATE FLAVOUR SHAKE N GO	

Compound Vitamin and Mineral Mixture – Ingredient Details		
Ingredient	mg/100g in product recipe	mg/portion in product recipe
Magnesium Citrate		
Potassium Citrate		
Vitamin C [Ascorbic Acid]		
Ferrous Sulphate		
Vitamin E [DL-Alpha Tocopherol Acetate]		
Zinc Sulphate		
Niacin [Nicotinamide]		
Vitamin A [Retinyl Acetate]		
Calcium D-Pantothenate		
Copper Gluconate		
Manganese Sulphate		
D-Biotin		
Sodium Selenite		
Chromium Chloride		
Vitamin D3 [Cholecalciferol]		
Vitamin B12 [Cyanocobalamin]		
Vitamin B6 [Pyridoxine Hydrochloride]		
Vitamin K [Phylloquinone]		
Potassium Iodide		
Thiamin Mononitrate		
Riboflavin		
Sodium Molybdate		
Folic Acid		

 by CambridgeWeight Plan [®]	Non-Mandatory Information
---	---------------------------

Vegetarian Status	Suitable for vegetarians.
Vegan Status	Not suitable for vegans.
Halal Status	Product is not halal certified.
Ingredients Appropriate for Pictorial Representation	<i>Milk, Cocoa Beans</i>

Nutrition and Health Claims Information		
Claim	Justification	Conditions
"Substituting one of the main daily meals of an energy restricted diet with a meal replacement contributes to the maintenance of weight after weight loss"	Product nutrition is compliant with the conditions stated in the annex of regulation (EU) 2016/1413.	In order to bear the claim, information shall be provided to the consumer on the importance of maintaining an adequate daily fluid intake and on the fact that the products are useful for the intended use only as part of an energy-restricted diet and that other foodstuffs should be a necessary part of such a diet.
"Substituting two of the main daily meals of an energy restricted diet with meal replacements contributes to weight loss"	Product nutrition is compliant with the conditions stated in the annex of regulation (EU) 2016/1413.	In order to bear the claim, information shall be provided to the consumer on the importance of maintaining an adequate daily fluid intake and on the fact that the products are useful for the intended use only as part of an energy-restricted diet and that other foodstuffs should be a necessary part of such a diet.
"High Protein"	The energy from protein in this product is >20% of the overall energy content.	None, unless a corresponding health claim is made.
"High [Vit/Min]"	All vitamins and minerals in the nutritional declaration provide at least 30% of the RI/NRV. (This excludes potassium)	None, unless a corresponding health claim is made.

Micro-Profile			
	Target	Accept	Reject
Commercial Sterility	Absent in 400 samples	No insterility	Present in 400 samples

THE 1:1 DIET by CambridgeWeight Plan [®]	Version Control (Technical Use Only)
---	--

Revision	Reason for Revision	Issue Date
1.0	First issue for new product launch.	11/02/2020
1.1	QUID included.	11/03/2020
1.2	New document format. Storage instructions updated.	06/09/2023